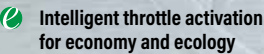


URW-547 (4.0t x 2.5m)

- Total width 1.4m
- Max working radius 17.83m
- Diesel powered and optional mains electric
- Zero length increase with electric option
- Operator control of outrigger extension
- Intelligent voice warning system
- Radio remote control as standard
- Working area limitation
- Slew limitation (optional)
- Intelligent throttle activation for economy and ecology



The URW-547 offers extended reach, providing a maximum lifting height of 18.2 metres and a maximum lifting capacity of 4 tonnes as standard on the main boom. The outrigger footprint remains the same as the URW-506, maintaining its compact dimensions. An option of additional length is given with a quickly installed searcher hook, with angles varying for 0° to 60° and a maximum capacity of 500kgs.

CRANE SPECIFICATIONS

Crane capacity	capacity:	4.0t x 2.5m
Max working radius	max:	17.83m
Max lifting height	approx:	18.2m
Rope length	max:	22.32m (4 fall), 46.13m (2 fall), 93.76m (1 fall)
Dimensions	folded:	4955mm (l) x 1400mm (w) x 1980mm (h)
Weight	unladen:	5010kg (5160kg with electric option)
Point loadings	Due to the many variables involved, point loadings are only available on request	
Hook speed	approx:	14m/min (with 5 layers and 4 falls)
Telescopic system	boom length:	3.99 - 18.02m
	telescoping speed:	14.03m/35 seconds
	boom type:	7 section hydraulically telescoping boom, hexagonal box construction
Derricking angle/speed	approx:	0 - 80° / 18.0 seconds
Slewing angle/speed	approx:	360° (continuous) 2.5min rpm
Traction system	drive:	hydrostatic 2-speed, stepless forward and reverse
	travel speed:	0 - 3km/h
	gradeability:	± 20° (vertical) 20° (traverse)
	track ground length:	1750mm
	track ground pressure:	47kPa (0.48kg/cm ²)
	track width:	300mm
Engine	manufacturer:	Mitsubishi / Yanmar
	fuel:	diesel (electric dual power option)
	maximum output:	175kW (23.8PS) / 2100min rpm
	starting method:	electric
	tank capacity:	40 litres
Electric motor	power:	75kW
	voltage:	400v AC 50/60Hz
Standard equipment	computer controlled moment limiter (safe load indicator), radio remote control, overwinding alarm, computer controlled intelligent voice warning system, multi-function operation by radio remote control, intelligent throttle activation, automatic hook stow, overload warning alarms, overload warning lamps, working area limitation	
Optional equipment	1 fall hook block, 2 fall hook block, mains electric dual power (400v), low marking tracks, slew limitation, searcher hook small 500kg, radio remote control with feedback display, data logging, forward facing camera	

REMOTES



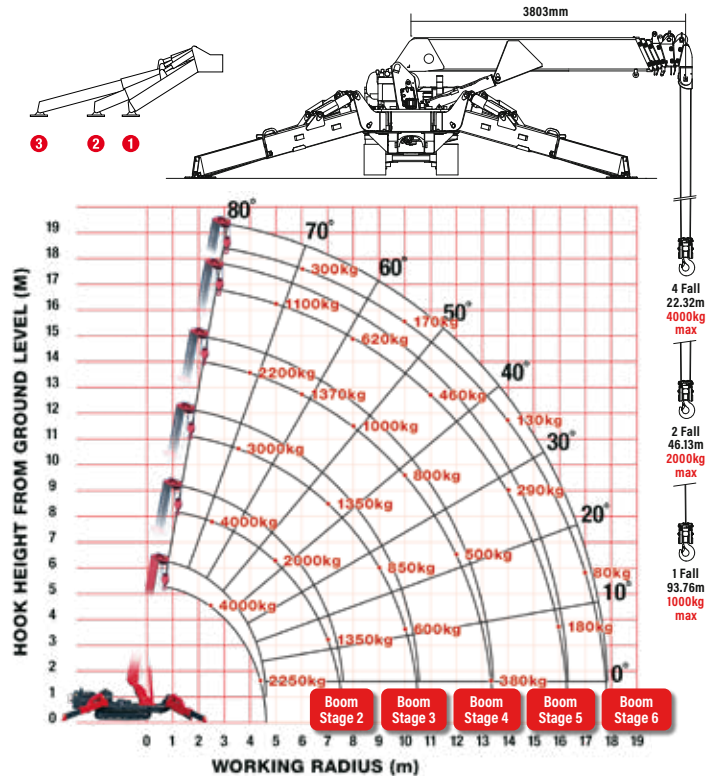
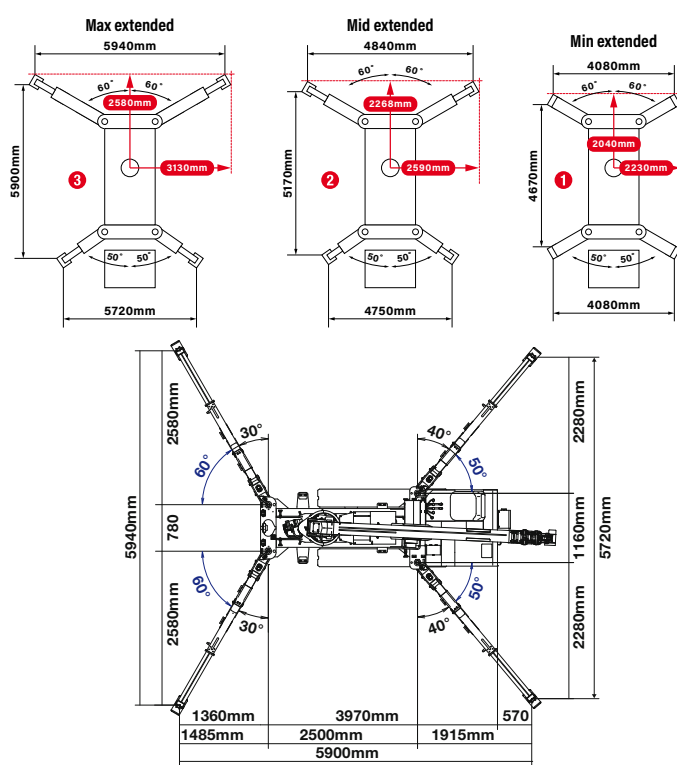
Standard radio remote control



Optional radio remote control with digital feedback

MINI SPIDER CRANE

RATED LOADS & OUTRIGGER POSITIONS



SECOND STAGE EXTENDED 3.99 - 7.7m BOOM LENGTH

Working radius	m	up to 2.5	2.7	3.0	3.5	4.0	4.5	5.0	5.5	6.0	7.0	7.25	7.51
Outrigger Max-extended	kg	4000	3850	3500	3000	2550	2250	2000	1800	1630	1350	1350	1300
Outrigger Mid-extended	kg	4000	3850	3500	3000	2550	2200	1850	1630	1400	1010	1010	850
Outrigger Min-extended	kg	4000	3850	3500	3000	2550	2100	1640	1320	1080	750	750	620

THIRD STAGE EXTENDED 7.7 - 10.66m BOOM LENGTH

Working radius	m	up to 3.5	4.0	5.0	6.0	7.0	8.0	9.0	10.0	10.20	10.47
Outrigger Max-extended	kg	3000	2550	2000	1650	1350	1100	850	600	600	520
Outrigger Mid-extended	kg	3000	2550	1850	1400	1100	830	630	490	490	430
Outrigger Min-extended	kg	3000	2550	1650	1150	840	620	460	350	350	300

FOURTH STAGE EXTENDED 10.66 - 13.57m BOOM LENGTH

Working radius	m	up to 4.0	4.5	5.0	6.0	7.0	8.0	9.0	10.0	11.0	12.0	13.0	13.38
Outrigger Max-extended	kg	2200	1900	1700	1370	1150	1000	900	800	660	500	410	380
Outrigger Mid-extended	kg	2200	1800	1600	1300	1050	850	700	550	450	360	290	260
Outrigger Min-extended	kg	2200	1800	1600	1150	800	650	520	400	320	250	190	170

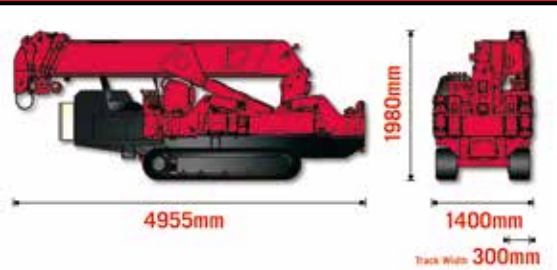
FIFTH STAGE EXTENDED 13.57 - 16.48m BOOM LENGTH

Working radius	m	up to 5.0	5.5	6.0	7.0	8.0	9.0	10.0	11.0	12.0	13.0	14.0	15.0	16.0	16.29
Outrigger Max-extended	kg	1100	950	880	730	620	570	520	460	410	350	290	230	180	170
Outrigger Mid-extended	kg	1100	950	880	700	600	520	450	400	350	300	250	190	150	140
Outrigger Min-extended	kg	1100	950	850	700	500	420	390	340	290	230	180	140	100	100

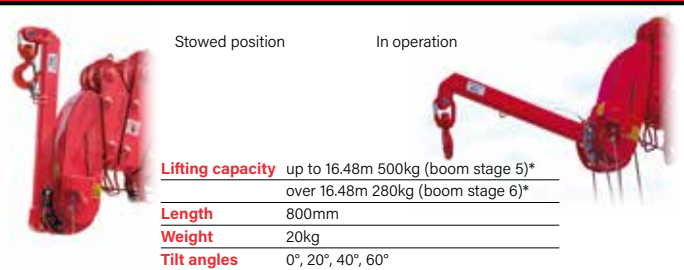
SIXTH STAGE EXTENDED 16.48 - 18.02m BOOM LENGTH

Working radius	m	up to 6.0	7.0	8.0	9.0	10.0	11.0	12.0	13.0	14.0	15.0	16.0	17.0	17.83
Outrigger Max-extended	kg	300	250	230	200	170	160	150	140	130	120	110	80	50
Outrigger Mid-extended	kg	300	250	230	200	170	160	150	140	130	120	110	80	50
Outrigger Min-extended	kg	300	250	230	200	170	160	150	140	130	120	110	80	50

DIMENSIONS



SEARCHER HOOK SMALL - 500kg



* Please note: The URW-547 lifting capacity information is based on boom stages, not boom sections.